

Tips

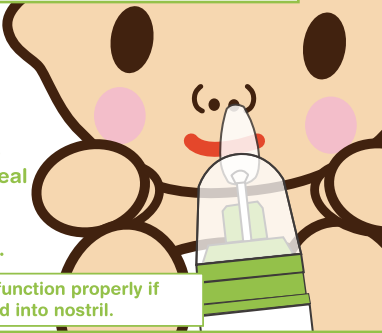
for Better Results



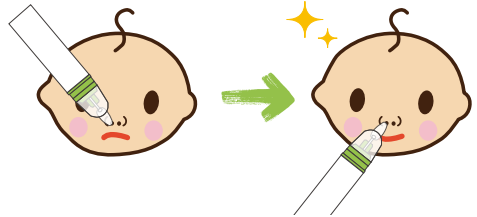
Put the silicone tip deeply into nostril.

Tip should be placed deeply into nostril to seal off the opening completely.

Tip will not function properly if air is allowed into nostril.



Change the angle and direction of the silicone tip once in place.



Moving the tip allows you to find the right spot for best results.

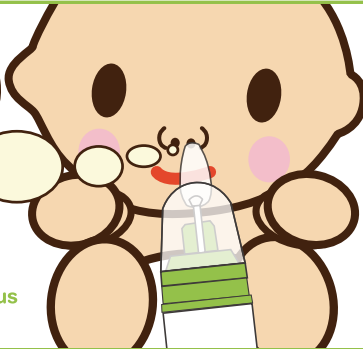
Suction for 5 seconds once nostril is sealed with silicone tip.

I'm Mr. Sticky Runny Nose.



I like it here in the deep back.

Suction slowly and thoroughly to allow for sticky and trapped mucus to be cleaned out.







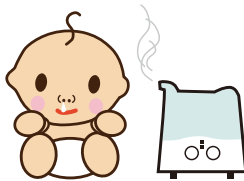




Suctioning works best right after....



a warm bath...



using a warm humidifier...



a hot meal...

TROUBLESHOOTING

Not suctioning well?

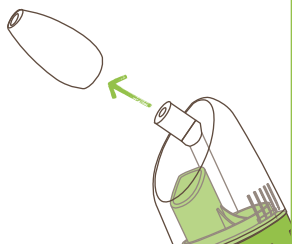


BabySmile

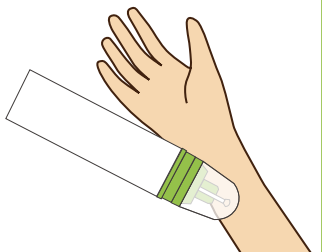
Please check below when you believe suction is not working properly.

Please check below when you believe suction is not working properly. Let's check to see if the device is working properly.

Remove the silicone tip and turn the power button "ON."



Place the tube part of the suction cup on the inside of your arm for 7 seconds.



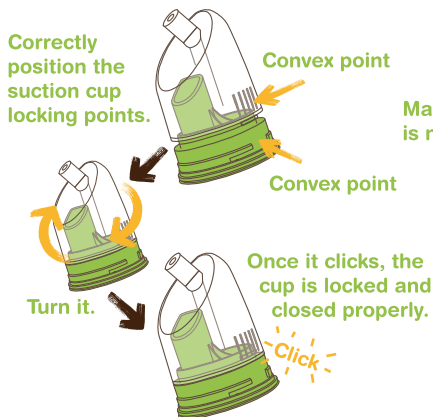
If your skin is lifted by the suction, it is working correctly.



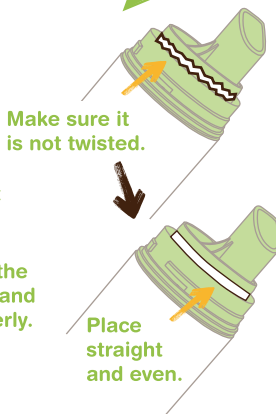
Your skin will become a little red.

If the skin is not lifting and not turning red, please check below.

1. Check that suction cup is properly closed.



2. Check that the rubber seal is placed properly.



The rubber seal is removable for cleaning (do not lose). The suction will not operate if the suction cup is missing.



A rattling sound will alert you if the rubber seal is missing.



If you are still experiencing technical difficulty, please email us:

support@babyhealthcare.us